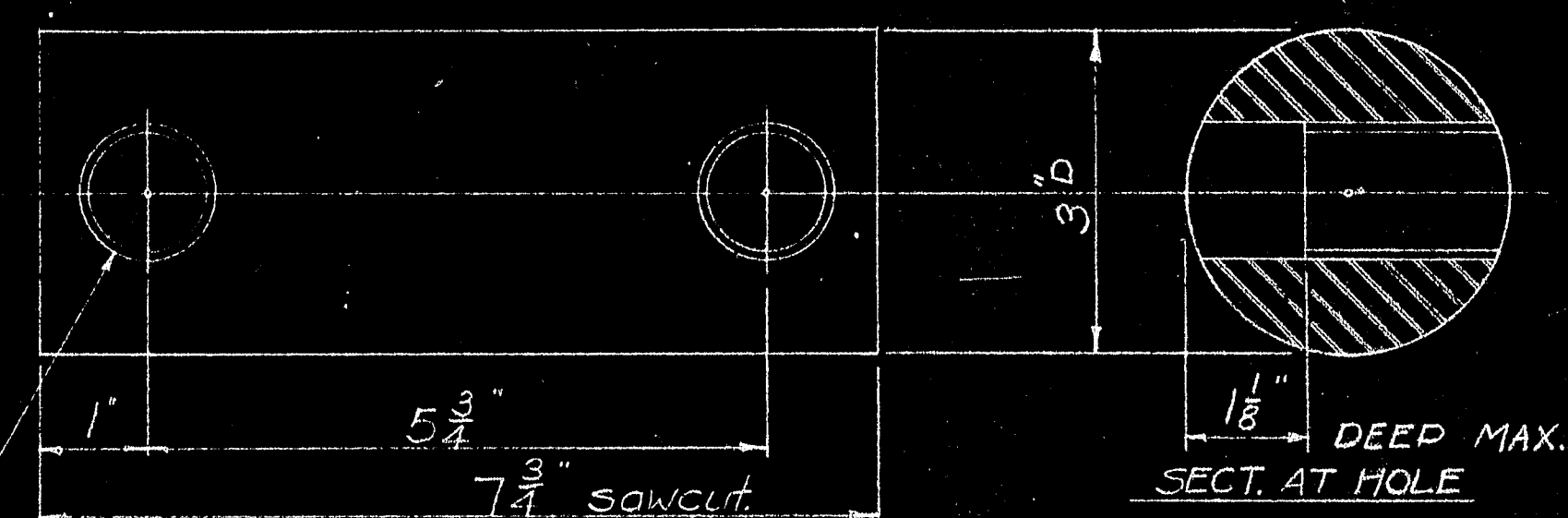
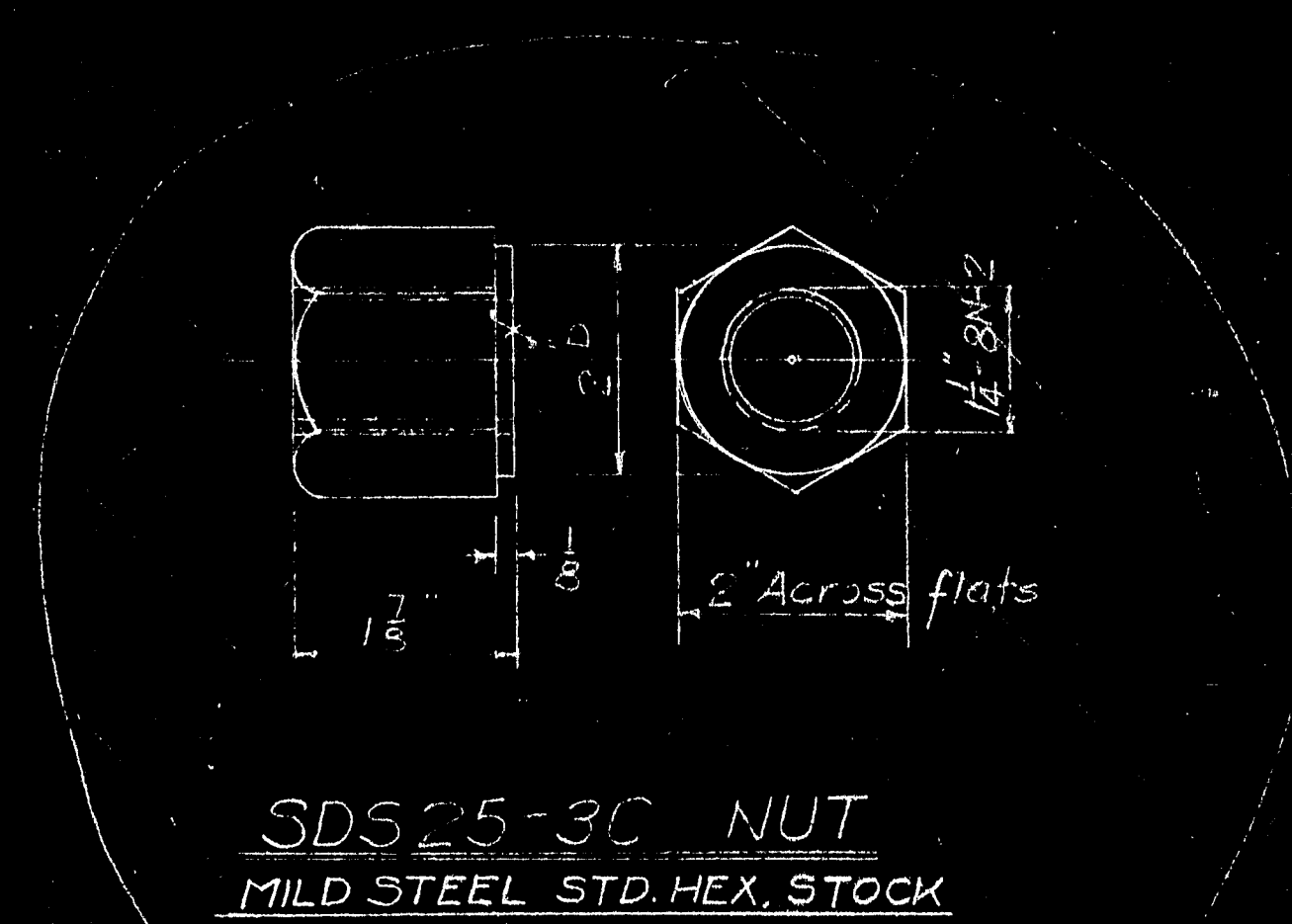


**SDS25-3A STIRRUP**  
SAE 1045 FORGING BAR OR EQUAL



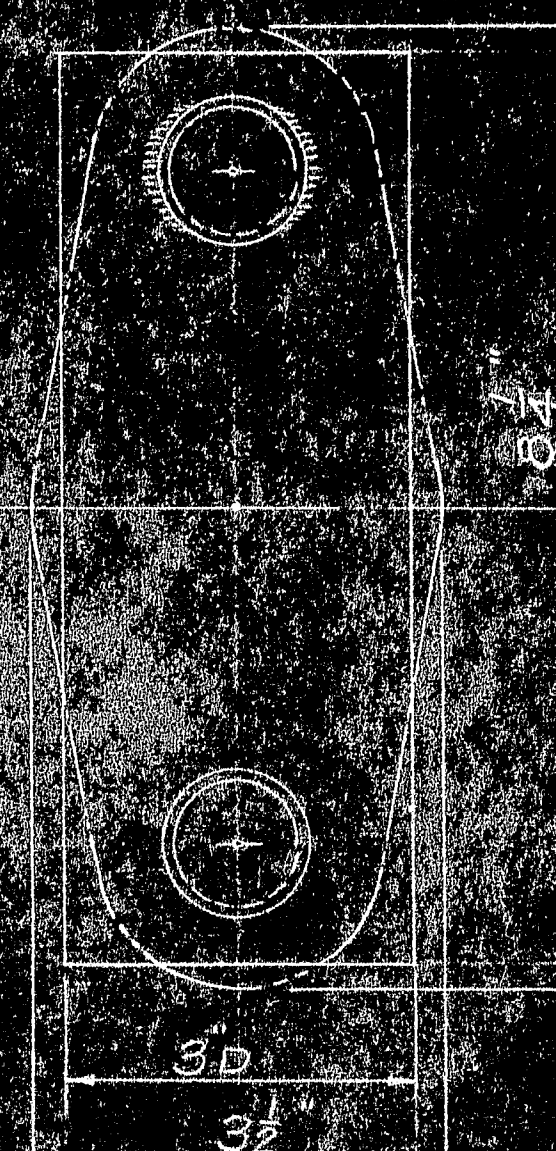
**SDS25-3B - PIN**  
SAE 1045 - COLD FINISHED OR EQUAL  
2 Holes - 1" Tap drill, 1 1/4" Body drill 1 1/8" deep, 1/2-7NC-2 Tap.  
Holes MUST be in line & parallel.



**SDS25-3C NUT**  
MILD STEEL STD. HEX. STOCK

**MFGR'S. NOTE -**

Assemble ONE stirrup in pin to wrench tight seat and tack weld to pin as shown. Hand assemble other stirrup in pin.



**FIELD NOTE**

Tack weld or peen OTHER stirrup AFTER pin is assembled in anchor.

*Deer Isle  
Lower end of Transverse stays*

MARK	REQ'D.	MAT'L.	REQ. NO.	NAME	REMARKS
SDS21-3	ONE	-		Bridge Bowl	Est Wt 17
SDS25-3C	2	See Note		Nut	3
SDS25-3B	ONE	See Note		Pin	32
SDS25-3A	2	See Note		Stirrup	
BILL OF MATERIAL FOR ONE SOCKET					
JOHN A. ROEBLING'S SONS CO., TRENTON, N.J.					
SPEC. OPEN BRIDGE SOCKET					
FOR 1" BRIDGE CABLE					
BY	REVISIONS	DATE	UNLESS 6" x 12"		
APPROVED			SERIAL	SHEET	
CH.D.F.T.S.			DES. DR. 5-20-40	SDS25 3	
ENG'R.			TR.		

